

# DON'T LET OUTDATED SYSTEMS HAUNT YOU

## MIGRATE TO SHAREPOINT ONLINE BEFORE ITS TOO LATE!

Hi %%First-Name%%,

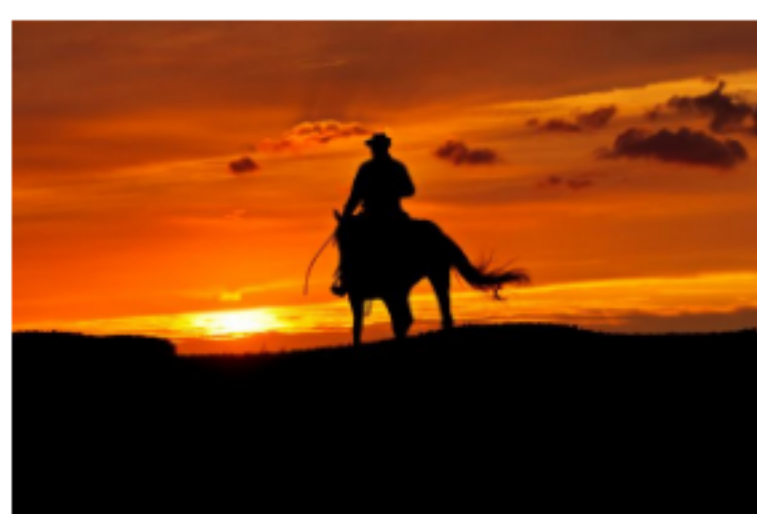
With SharePoint Server nearing its end-of-life in early 2026, we're actively partnering with organizations of all sizes to ensure their seamless migration to SharePoint Online. We're not just moving them; we're transforming their digital landscapes into something truly extraordinary.

In today's ever-evolving business landscape, modernization is the name of the game. It's not just about staying up-to-date; it's about fully embracing the wealth of capabilities that SharePoint Online has to offer. The modern experience in SharePoint is designed to be compelling, flexible, mobile-ready, and high-performing. It's a breath of fresh air for your organization, waiting to be embraced. Modernizing will also allow you to address the impending obsolescence of Designer 2013 workflows and InfoPath forms, which will also be retired in 2026.

Don't let the specter of outdated software send shivers down your spine. Embrace the power of SharePoint Online and prepare for a brighter, more agile, and secure digital future. We've curated a collection of our latest insights on SharePoint Migration and Modernization. Explore these resources, and remember, we're here to lend a helping hand at any stage of your migration or modernization process.

Happy Halloween, and let's embark on this migration journey together! 🦇🕸

## Resources



### The End of SharePoint Server – A Full Retirement is on the Horizon

Microsoft has announced that July 14, 2026, is the official end-of-life date for both SharePoint Server 2016 and 2019. Learn what this means for organizations dependent on SharePoint Server and what migration options are out there.

[Read More](#)



### SharePoint 2013 Workflow Will Be Retired in 2026

SharePoint 2013 workflow will be officially retired and removed from Microsoft 365 on April 2, 2026, including Government Clouds. Learn who will be affected by the retirement and how to get started migrating to workflows to Power Automate.

[Read More](#)



### The Compass Guide to SharePoint Online Migrations

Ready to start planning your migration to SharePoint Online? Download our free eBook to understand the benefits of modernization, best practices for migration planning, and our SharePoint Migration methodology.

[Read More](#)

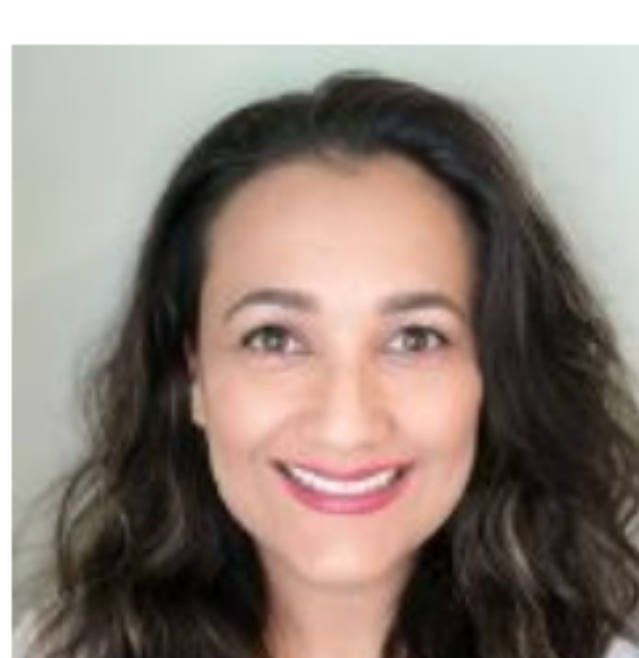


### The Compass Guide to InfoPath Replacement with Power Apps

The time to replace InfoPath with Power Apps is now. Download our free guide to get started on your modernization process.

[Read More](#)

## Get to know the Compass team



### Evelyn Runnals

Solutions Manager | Platform Services Team

As a Solutions Manager and Migrations Specialist, Evelyn works with customers to design, implement, and support SharePoint, Microsoft Teams, and Microsoft 365 solutions.

#### Areas of Expertise/Certifications:

Microsoft SharePoint, Teams, and Power Platform. M365 workplace collaboration design, planning and implementation. Content migration and site design upgrades. User adoption and training.

*"I enjoy helping businesses solve their day-to-day pain points with technology by implementing solutions that save them time and make the work more enjoyable and efficient!"*

**- Evelyn Runnals**

As always, the Compass365 team is here to assist you in improving the way your organization operates and your employees work with SharePoint and the Microsoft 365 platform.

If you have a vision for driving improvements and would like to discuss your ideas with our team of Microsoft consultants, please reach out at any time.

[Contact Us](#)

Thank you for reading,

**Cathy**

Cathy Ashbaugh

VP, Client Success | Compass365, a division of General Networks

[cashbaugh@compass365.com](mailto:cashbaugh@compass365.com) | 714-395-9060 | [compass365.com](https://compass365.com)

